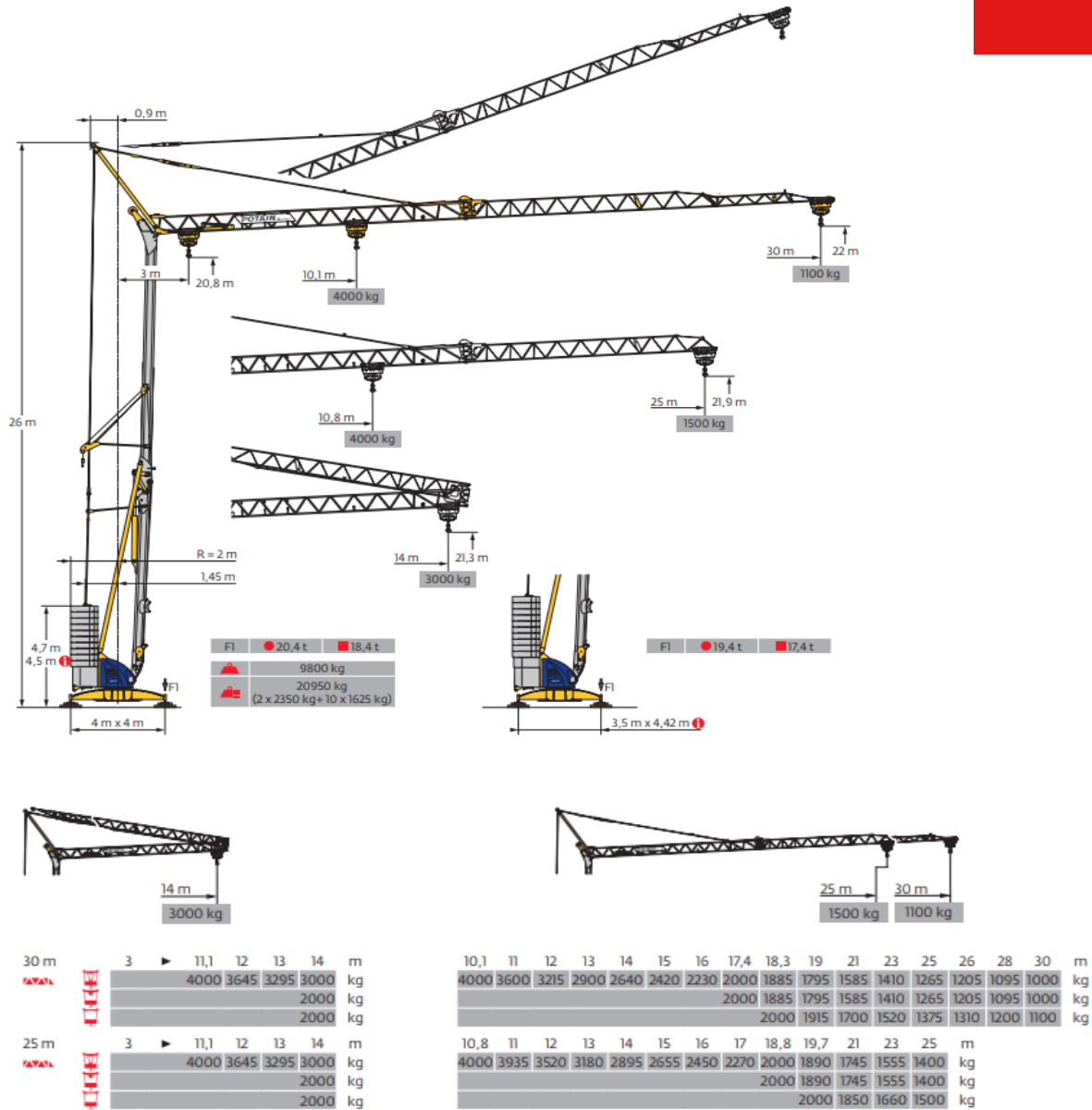





Potain Igo T 32

Technische Daten		Details techniques	
Konstruktionsgewicht	18'400 kg	Spindelabstand	4m x 4m
Poids de la grue		Ecartement	
Gegengewicht	20'950 kg	Anschluss	16 mm ²
Contrepoids		Câble d'alimentation	
Drehradius	3 - 3.3m	Ges. elektr. Leistung	14 kVA
Rayon de giration		Puissance total	
Max. Eckdruck	369 kN	Absicherung	63 A
Pression max. par galot		Fusible:	

 Motor [kW] 11.0 m/min. 3.6-66.5	 Motor [kW] 2.2 m/min. 15-41	 Motor [kW] 1.5 r.p.m. 0 - 0,8
--	--	--

Frutiger AG Betriebe Uetendorf
 Postgässli 23 / 3661 Uetendorf
 www.der-werkhof.com / www.frutiger.com