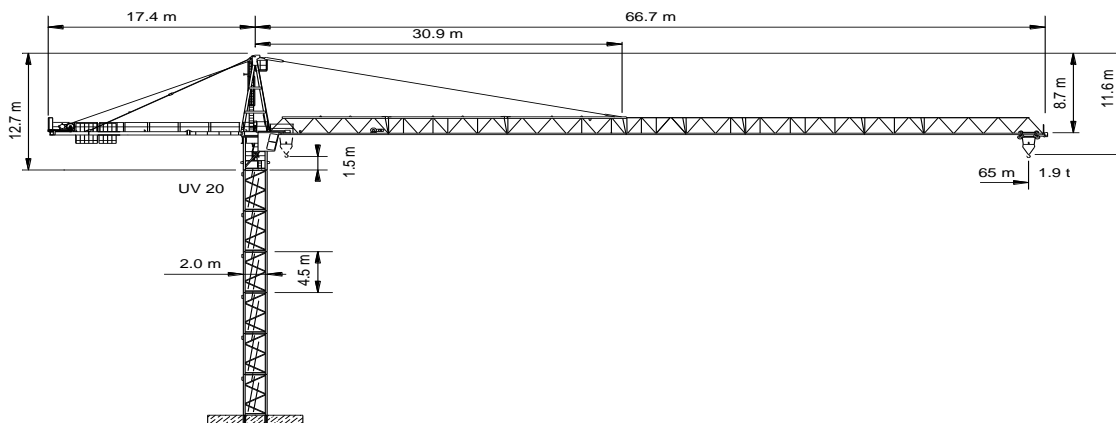


WOLFF WK 6522 FL-6/12 (CCplus)

Spitze 10 700 kg
 Ausleger 12 200 kg
 Gegenausleger 9 060 kg
 Autokran HK + 16 m



4 x 35°
 100 A
 154 A

Ausladung / portée [m]		25	30	35	40	45	50	55	60	65			
Auslegerlänge [m] flèche [m]	65	2.6 - 15.5	12.0	6.8	5.4	4.4	3.7	3.2	2.7	2.4	2.1	1.8	Tragfähigkeit [t] force de levage [t]
	60	2.6 - 16.6		7.4	5.9	4.9	4.1	3.5	3.0	2.6	2.3	(2.1)	
	55	2.6 - 17.6		7.9	6.4	5.3	4.4	3.8	3.3	2.9	(2.7)		
	50	2.6 - 18.7		8.5	6.8	5.7	4.8	4.1	3.6	(3.3)			
	45	2.6 - 20.2		9.4	7.5	6.3	5.3	4.6	(4.1)				
	40	2.6 - 21.0		9.8	7.9	6.6	5.6	(5.0)					
	35	2.6 - 21.4		10.0	8.1	6.7	(6.1)						
	30	2.9 - 21.7		10.2	8.2	(7.3)							

Ausladung / portée [m]		25	30	35	40	45	50	55	60	65			
Auslegerlänge [m] flèche [m]	65	2.6 - 28.0	6.0	6.0	5.5	4.5	3.8	3.3	2.8	2.5	2.2	1.9	Tragfähigkeit [t] force de levage [t]
	60	2.6 - 30.0		6.0	6.0	5.0	4.2	3.6	3.1	2.7	2.4	(2.3)	
	55	2.6 - 31.9		6.0	6.0	5.4	4.5	3.9	3.4	3.0	(2.8)		
	50	2.6 - 33.9		6.0	6.0	5.8	4.9	4.2	3.7	(3.5)			
	45	2.6 - 36.8		6.0	6.0	6.0	5.4	4.7	(4.3)				
	40	2.6 - 38.9		6.0	6.0	6.0	5.7	(5.5)					
	35	2.6 - 35.0		6.0	6.0	6.0	(6.0)						
	30	2.9 - 30.0		6.0	6.0	(6.0)							

	Motor [kW]	45		Motor [kW]	7.5		Motor [kW]	2 x 5
	m/min.	0...140		m/min.	1...80		r.p.m.	0...0.75 m ⁻¹

(...) Traglast mit CCplus