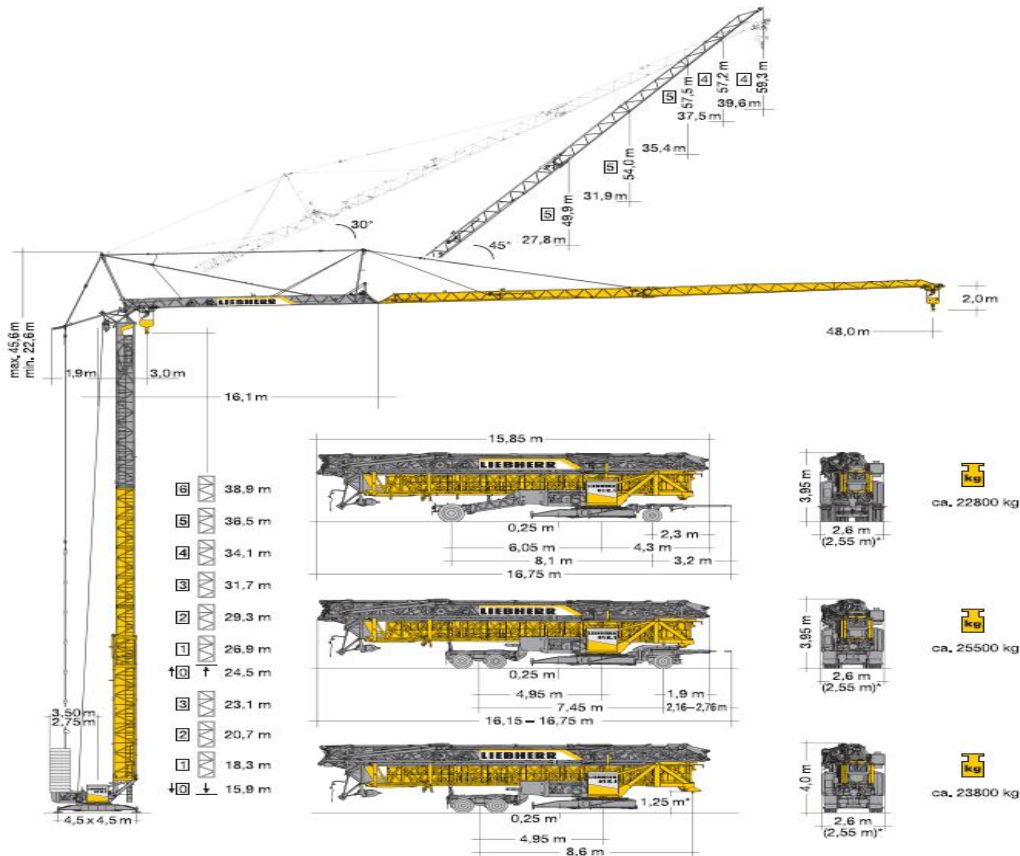


LIEBHERR 81 K.1



m	m/kg	m/kg	Load-Plus															
			12,0	15,0	18,0	21,0	23,0	25,0	27,0	29,0	31,0	33,0	35,0	37,0	40,0	42,0	45,0	48,0
48,0	3,0 - 12,0 6000	6000	4830	4030	3440	3120	2860	2630	2430	2260	2110	1970	1850	1690	1590	1460	1350	
45,0	3,0 - 13,3 6000	6000	5360	4500	3870	3530	3240	2990	2770	2580	2410	2260	2130	1950	1840	1700		
42,0	3,0 - 14,1 6000	6000	5640	4710	4030	3670	3370	3100	2870	2670	2500	2340	2200	2010	1900			
37,0	3,0 - 15,1 6000	6000	6000	5040	4310	3930	3600	3320	3070	2860	2670	2500	2350					
31,0	3,0 - 16,3 6000	6000	6000	5470	4720	4320	3980	3690	3430	3200								

m	m/kg	m/kg	LM 1															
			12,0	15,0	18,0	21,0	23,0	25,0	27,0	29,0	31,0	33,0	35,0	37,0	40,0	42,0	45,0	48,0
48,0	3,0 - 12,0 6000	6000	4620	3730	3110	2790	2530	2300	2110	1940	1800	1670	1550	1410	1320	1200	1100	
45,0	3,0 - 13,3 6000	6000	5220	4230	3540	3180	2890	2640	2420	2230	2070	1920	1800	1630	1530	1400		
42,0	3,0 - 14,1 6000	6000	5570	4520	3790	3410	3090	2820	2590	2400	2220	2070	1930	1750	1650			
37,0	3,0 - 15,1 6000	6000	6000	4930	4150	3740	3400	3110	2870	2650	2460	2300	2150					
31,0	3,0 - 16,3 6000	6000	6000	5370	4520	4080	3710	3400	3130	2900								

Technische Daten		Details techniques	
Konstruktionsgewicht	20'300 kg	Spindelabstand	4,5 x 4,5 m
Poids de la grue I		Ecartement	
Absicherung	40 A	Ges. elektr. Leistung	22 kVA
Fusible:	Ohne FI-Schutzschalter	Puissance total	
Drehradius I	3,5 m	Gegengewicht I	35'000 kg
Rayon de giration I		Contrepoids	
Drehradius II	2,75 m	Gegengewicht II	40'000 kg
Rayon de giration II		Contrepoids II	
Max. Eckdruck	289 - 416kN (ohne Kabine)		
Pression max. par galot	je nach Rüstzustand		

Motor [kW] FU 15,0 m/min. 12.7 - 76.1	Motor [kW] FU 3,0 m/min. 0 - 60	Motor [kW] FU 5,0 r.p.m. 0 - 0.8 m ⁻¹
--	------------------------------------	---

