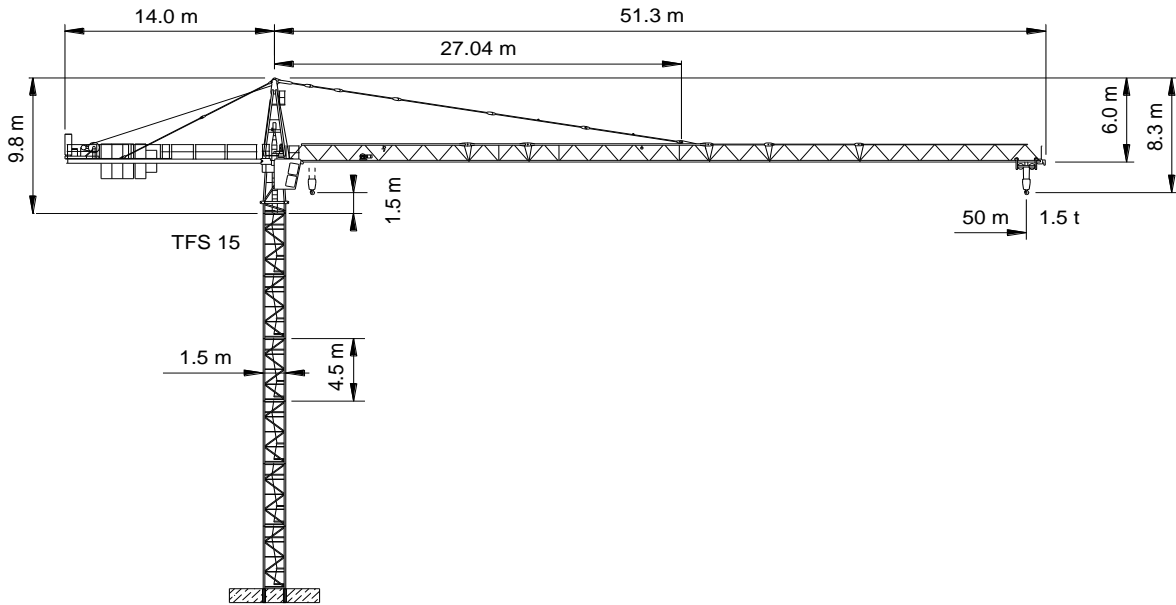


# WOLFF WK 5015 FL (CCplus)



Spitze 5 600 kg  
 Ausleger 6 700 kg  
 Gegenausleger 5 000 kg  
 Autokran HK + 13 m



Anschluss / câble d'alimentation: 4 x 16<sup>°</sup>  
 Absicherung / fusible: 63 A  
 Anlaufstrom / courant de pointe maxi: 97 A

Ausladung / portée [m]		20	25	30	36	42	46	50		
Auslegerlänge [m] flèche [m]	50	2.5 - 17.0	6.0	4.9	3.8	3.0	2.4	1.9	1.7	Tragfähigkeit [t] force de levage [t]
	46	2.5 - 17.4		5.1	3.9	3.1	2.4	2.0	1.8	
	42	2.5 - 18.1		5.3	4.1	3.3	2.6	2.1	(2.1)	
	36	2.5 - 18.5		5.5	4.2	3.3	2.7	(2.4)		
	30	2.5 - 19.6		5.8	4.5	3.6	(3.0)			
				(4.0)						

Motor [kW] 28 m/min. 0...90	Motor [kW] 4 m/min. 1...80	Motor [kW] 5 r.p.m. 0...0.85 m <sup>-1</sup>
--------------------------------	-------------------------------	---