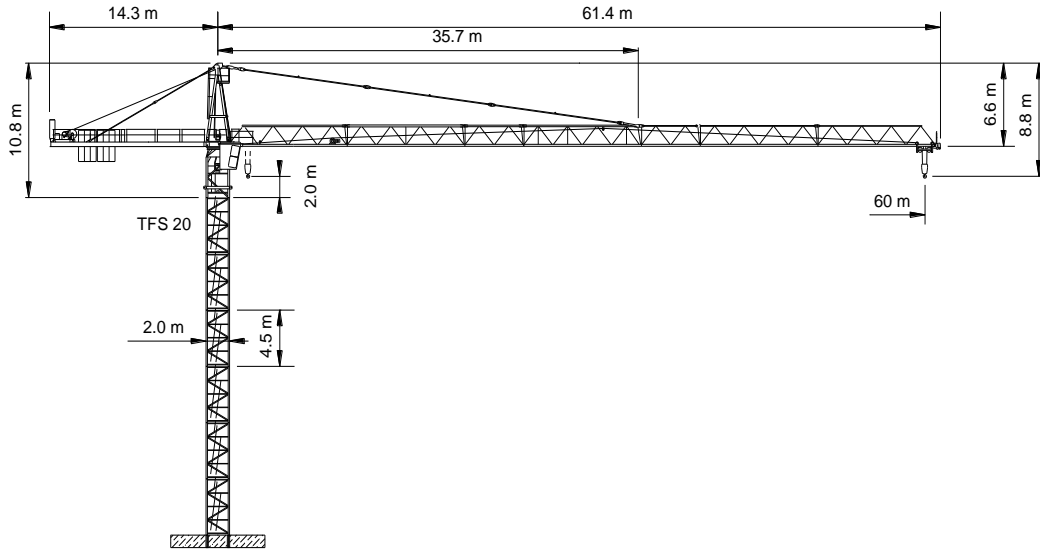


WOLFF WK 6017 FL (CC plus)

Frutiger

Spitze 7 900 kg
 Ausleger 9 700 kg
 Gegenausleger 7 500 kg
 Autokran HK + 15 m



Anschluss / câble d'alimentation: 4 x 35°
 Absicherung / fusible: 100 A
 Anlaufstrom / courant de pointe maxi: 138 A

Ausladung / portée [m]		30	35	40	45	50	55	60	
Auslegerlänge [m] fleche [m]	60	2.5 - 21.8	4.2	3.5	2.9	2.5	2.2	1.9	Tragfähigkeit [t] force de levage [t]
	55	2.5 - 23.2	4.5	3.7	3.2	2.7	2.7	2.1 (2.0)	
	50	2.5 - 25.2	4.9	4.1	3.5	3.0	2.7 (2.5)		
	45	2.5 - 25.7	5.0	4.2	3.6	3.1 (3.0)			
	40	2.5 - 27.0	5.3	4.4	3.8 (4.2)				
	35	2.5 - 27.2	5.4	4.5 (4.9)					
	30	2.5 - 27.3	5.4 (5.9)						

↑	Motor [kW]	37	↔	Motor [kW]	7.5	↻	Motor [kW]	2 x 5
	m/min.	0...140		m/min.	1...100		r.p.m.	0.8 m ⁻¹