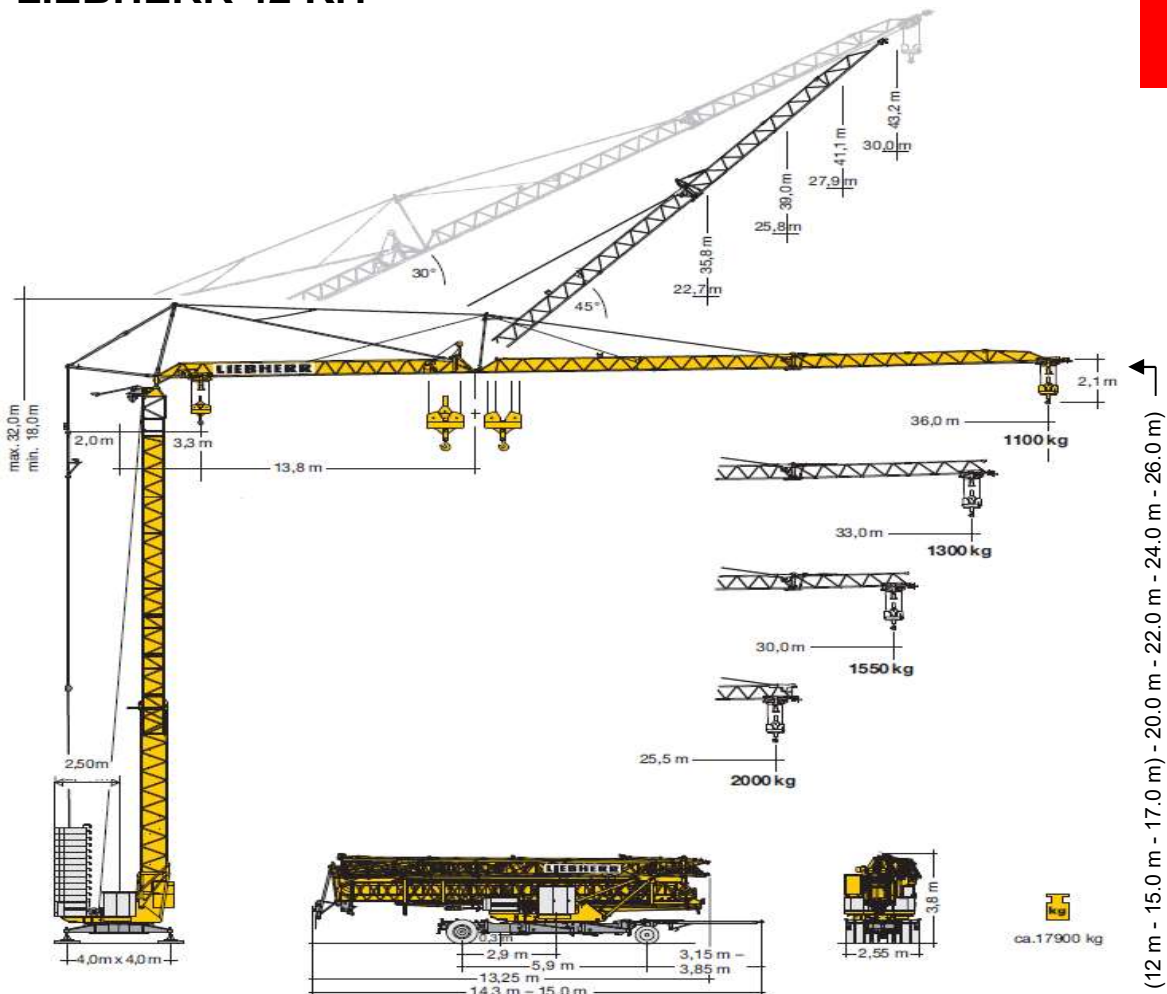


LIEBHERR 42 K.1



		m/kg																			
m	m/kg	13,0	14,0	16,0	18,0	20,0	23,0	24,0	25,0	25,5	26,0	27,0	28,0	29,0	30,0	31,0	32,0	33,0	34,0	35,0	36,0
36,0	3,3 - 22,56 2000	2000	2000	2000	2000	2000	1950	1850	1760	1720	1680	1600	1530	1460	1400	1340	1290	1230	1190	1140	1100
33,0	3,3 - 23,46 2000	2000	2000	2000	2000	2000	1950	1850	1800	1760	1680	1600	1530	1470	1410	1350	1300				
30,0	3,3 - 24,45 2000	2000	2000	2000	2000	2000	2000	1950	1900	1850	1770	1690	1620	1550							
25,5	3,3 - 25,50 2000	2000	2000	2000	2000	2000	2000	2000	2000	2000											

		m/kg																			
m	m/kg	13,0	14,0	16,0	18,0	20,0	23,0	24,0	25,0	25,5	26,0	27,0	28,0	29,0	30,0	31,0	32,0	33,0	34,0	35,0	36,0
36,0	3,3 - 12,77 4000	3910	3580	3040	2630	2320	1950	1850	1760	1710	1670	1600	1520	1460	1400	1340	1280	1230	1190	1140	1100
33,0	3,3 - 13,25 4000	4000	3740	3180	2760	2430	2050	1940	1850	1800	1760	1680	1600	1530	1470	1410	1350	1300			
30,0	3,3 - 13,79 4000	4000	3930	3340	2900	2550	2150	2050	1950	1900	1850	1770	1690	1620	1550						
25,5	3,3 - 14,36 4000	4000	4000	3510	3050	2690	2270	2150	2050	2000											

Technische Daten		Details techniques	
Konstruktionsgewicht Poids de la grue	11'800 kg	Spindelabstand Ecartement	4,0m m
Gegengewicht Contrepoids (1x 3'320kg/12x 1'750 kg/1x 725kg)	25'045 kg	Anschluss Câble d'alimentation	4 x 10 mm ²
Drehradius Rayon de giration	2,5 m	Ges. elektr. Leistung Puissance total	17 kVA
Max. Eckdruck Pression max. par galot	280 kN	Absicherung Fusible:	40 A

↕ Motor [kW] m/min.	11.0 4.0 - 50	↔ Motor [kW] m/min.	2.3 20 / 40	↻ Motor [kW] r.p.m.	3.0 0 - 0.9 m ⁻¹
------------------------	------------------	------------------------	----------------	------------------------	--------------------------------